

# THE JIMENEZ GROUP

*E-PORTFOLIO*

THE JIMENEZ GROUP  
1900 SUNSET HARBOUR DR. SUITE 2414  
MIAMI BEACH, FL 33139  
PHONE: (786) 472-1950  
EMAIL: [CONTACTUS@JIMENEZCOMPANY.COM](mailto:CONTACTUS@JIMENEZCOMPANY.COM)

[Grey Box]	<b>JORGE E. JIMENEZ-MARCOS</b> <b>AIA INTERNATIONAL ASSOCIATE</b>	
[Blue Box]	[Light Grey Box]	[Light Blue Box]
[Dark Blue Box]		

# THE JIMENEZ GROUP

## *ABOUT US*

THE JIMENEZ GROUP was established in Houston in 1978 with a focus on designing and building custom homes.

The Houston-based company is headed by its founder, Jorge E. Jimenez-Marcos who graduated with honors from the University of Buenos Aires, School of Architecture in 1970. He later returned to his alma mater as Professor of Architectural Design. Spanning over four decades, his career encompasses commercial construction, hi-rises custom homes, and affordable public housing. During his years in Argentina Mr. Jimenez-Marcos had as a major client the “Sindicato General de Empleados de Comercio”( business employee’s union in Argentina) and for them designed and built several low cost housing projects all over the territory of Argentina.

Mr. Jimenez-Marcos brings to the company his broad experience in the design, construction, and supervision of major project around the world. Prior to creating The Jimenez Group, his international contracts included

supervision of the American Embassy in Buenos Aires, Argentina, design and construction of PEMEX employee housing in Mexico and design and construction of private residences in Honduras and Argentina.

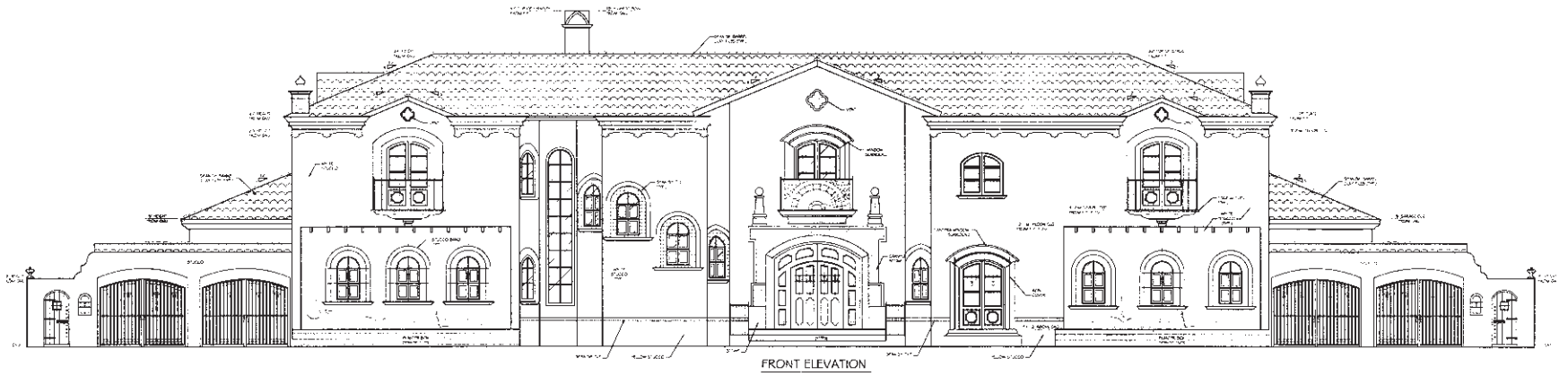
The company is also a leader in elegant residential remodeling and distinctive custom homes. His international expertise in design, supervision, procurement, and his knowledge of different construction systems made Jimenez-Marcos an ideal architect-contractor for clients overseas.

Feel free to contact our Co. for further information and samples of particular projects design and built by our Co. At The Jimenez Group, we offer a full range of services and look forward to serving your building needs in the near future.

15  
CARO  
LANE

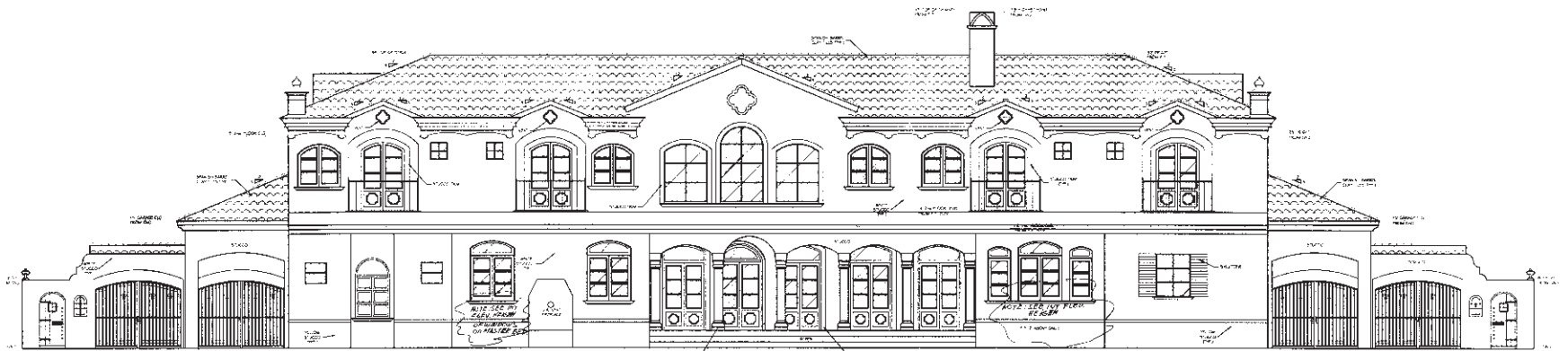
*DESIGN*











REAR ELEVATION

# MID CENTURY MODERN

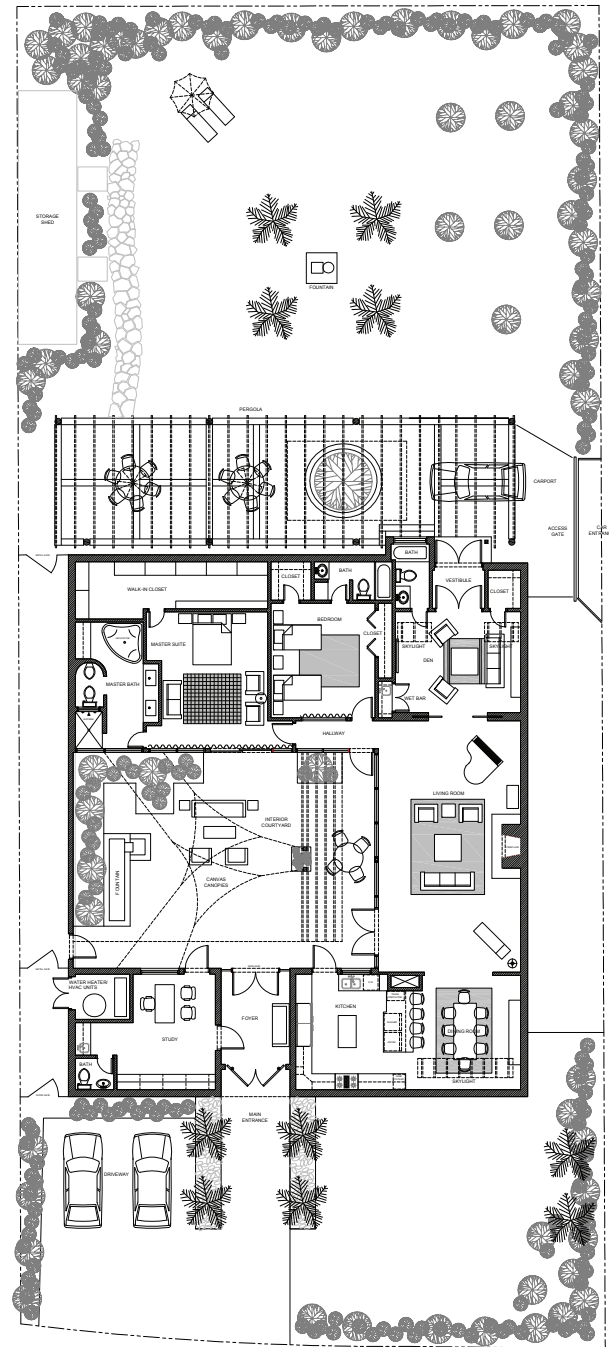
REMODELING







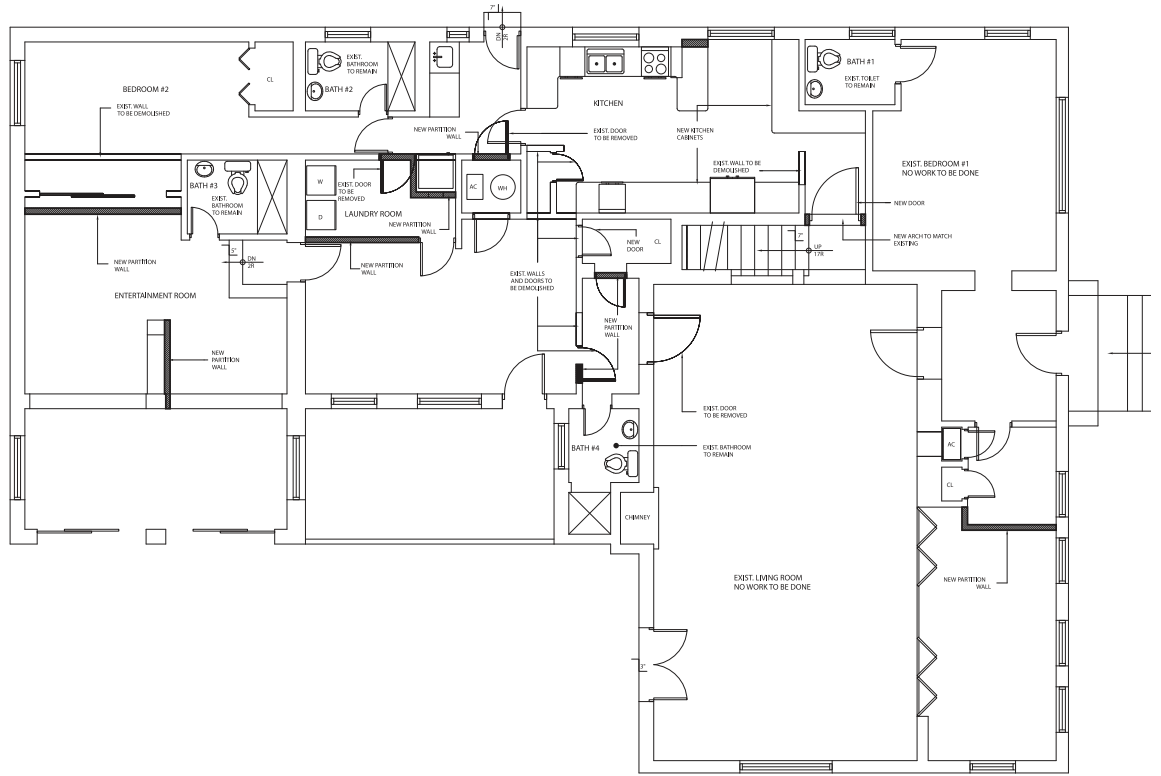
MID CENTURY MODERN *REMODELING*



4444  
ALTON  
ROAD

REMODELING





FIRST FLOOR DEMOLITION AND PROPOSED PLAN  
SCALE: 3/8" = 1'-0"



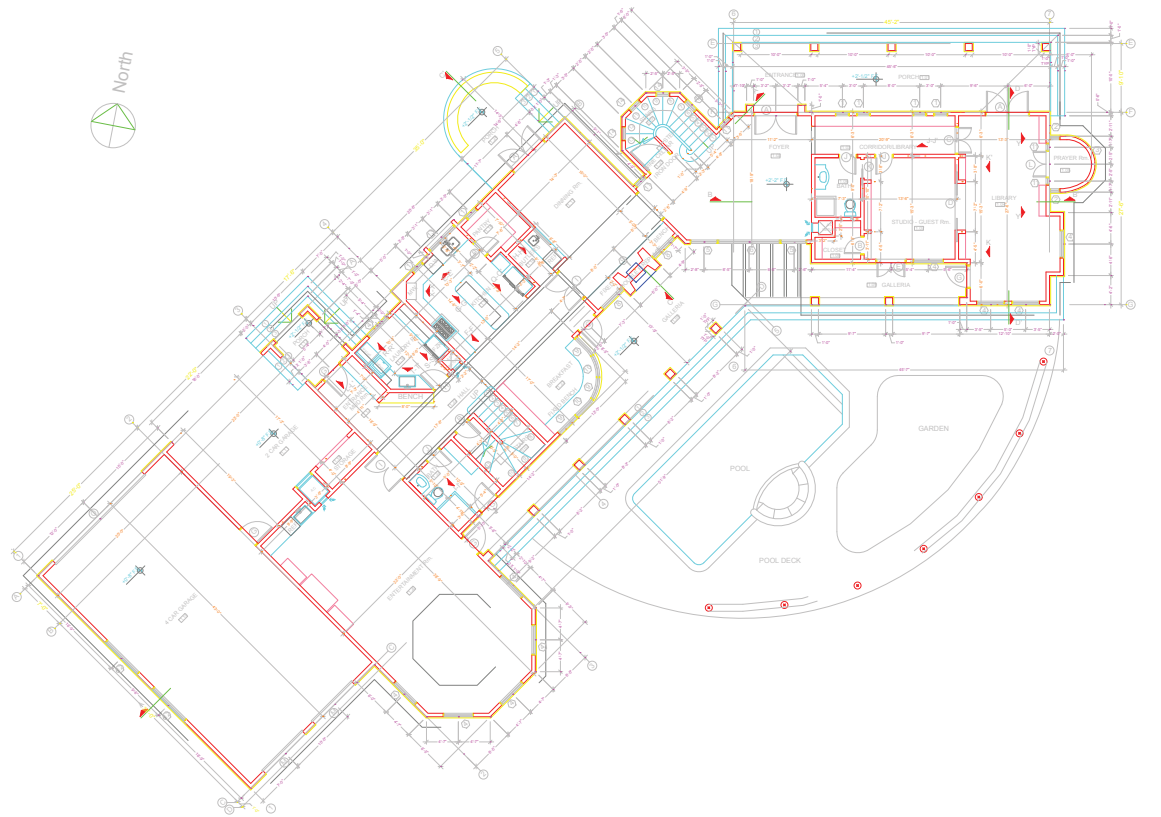
# ST. ELMO'S COURT SIENNA PT.

*DESIGN & CONSTRUCTION*







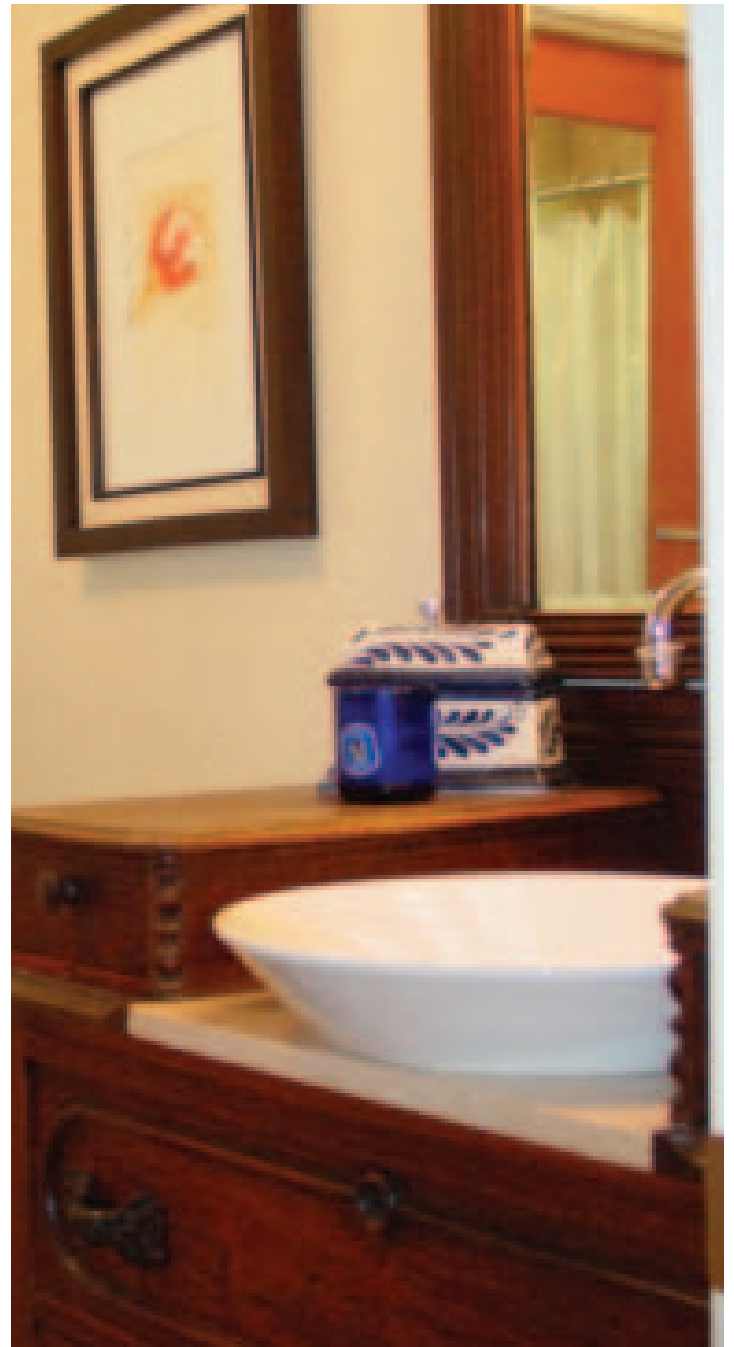




# SUEÑO AZUL

REMODELING





# JORGE E. JIMENEZ MARCOS

*PRINCIPAL*

JORGE E. JIMENEZ MARCOS brings his clients broad experience in the design, construction and supervision of major projects around the world. Mr. Jimenez Marcos personally oversees and directs all projects produced by the company.

He began his formation at the distinguished Otto Krause National Industrial School. The Otto Krause's curriculum follows the Bauhaus School in Germany. He received the title of Maestro Mayor de Obras, a specialized degree in construction, which also confers a license to build. This rigorous technical program provides the equivalent of a college education in engineering technology, similar to Bachelor of Engineering Technology program in the United States.

He continued his education at the University Of Buenos Aires School Of Architecture, where he graduated with honors in 1969. Mr. Jimenez Marcos complemented his formal training with practical work experience in New York and Western Europe. He then

served as an Associate Professor of Architecture on the Dean's team.

During his professional career prior to founding The Jimenez Group, Mr. Jimenez Marcos designed and supervised a variety of major projects in Argentina and around the world. In Argentina one of his principal clients was the Argentinean Business Employee's National Union, for whom he designed and built several housing projects, banks, offices and recreational facilities. He also supervised construction of the American Embassy Office building in Buenos Aires.

His international projects included the design and supervision of PEMEX Employee Housing project in Cerro Azul, Mexico. Design of luxury residential developments in Saudi Arabia and Spain. And the design, construction and supervision of private residences in Argentina, Honduras and the United States.